

Queen Introduction Frame Instructions

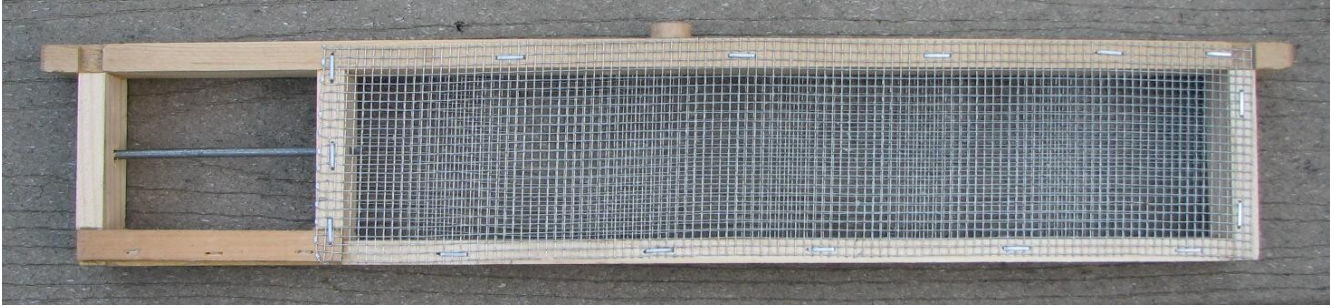


Illustration 1: Queen Introduction Frame

1. Remove cork plug from the end of the queen cage that DOES NOT have the candy, as shown on illustration 2. Keep a finger over the hole so the queen does not escape.

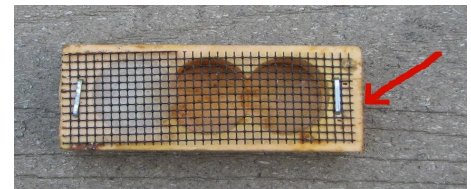


Illustration 2: Queen cage

2. Locate large passage hole in upright as shown in illustration 3.

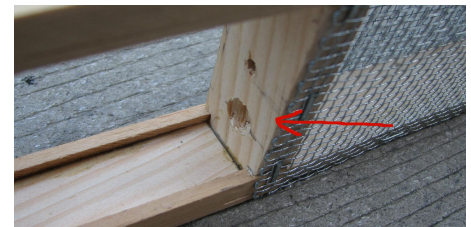


Illustration 3: Passage hole

3. Verify that exit plug is installed properly on the top of the frame. See illustration 4.



Illustration 4: Exit Plug

3. Insert queen cage into grooved area on the bottom of frame aligning the open end of the cage with the passage hole. See illustration 5.



Illustration 5: Queen cage in frame

Queen Introduction Frame Instructions

4. Secure queen cage with locking rod. See illustration 6.

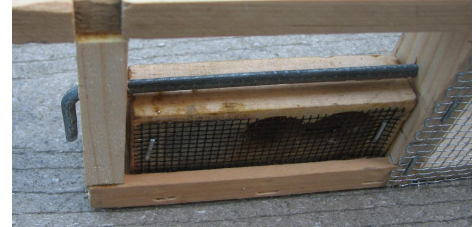


Illustration 6: Locking rod

5. Remove an outer frame from the hive and slide frames over to make room for the queen introduction frame in the center of the hive. Install the queen introduction frame in the center of the hive and leave undisturbed for 14 days.

6. After 14 days, gently open up hive and remove exit plug. See illustration 7. Close hive back up and leave undisturbed for 7 days.



Illustration 7: Remove exit plug

7. After 7 days, remove queen introduction frame and verify queen is no longer in frame. Set frame next to hive over night for bees to exit. Verify queen has started to lay.

Version 2 Enhancements

1. Now accepts plastic JZBZ type queen cages as well. One include with each frame just in case your new queen comes in a non-standard cage.



2. Larger exit hole to assist in the queen exiting quicker. Square top makes it easier to twist free from any propolis.



Queen Introduction Frame Instructions

3. Stronger solid one piece grooved bottom.



Advantages over other commercially available queen introduction frames

1. Positive queen cage retention. Don't worry about queen cage falling out and losing your queen. No need to use wax to hold cage in place.
2. Works with wooded and plastic queen cages. Sometimes you are at the mercy of the queen breeder as to how queens are shipped.
3. Deeper frame. Other frames barely are deep enough to get below the thickness of the adjacent frames top bars. With a deeper design, the cage extends further down in the brood area below any rim of capped honey, which allows attendant better access to the queen.